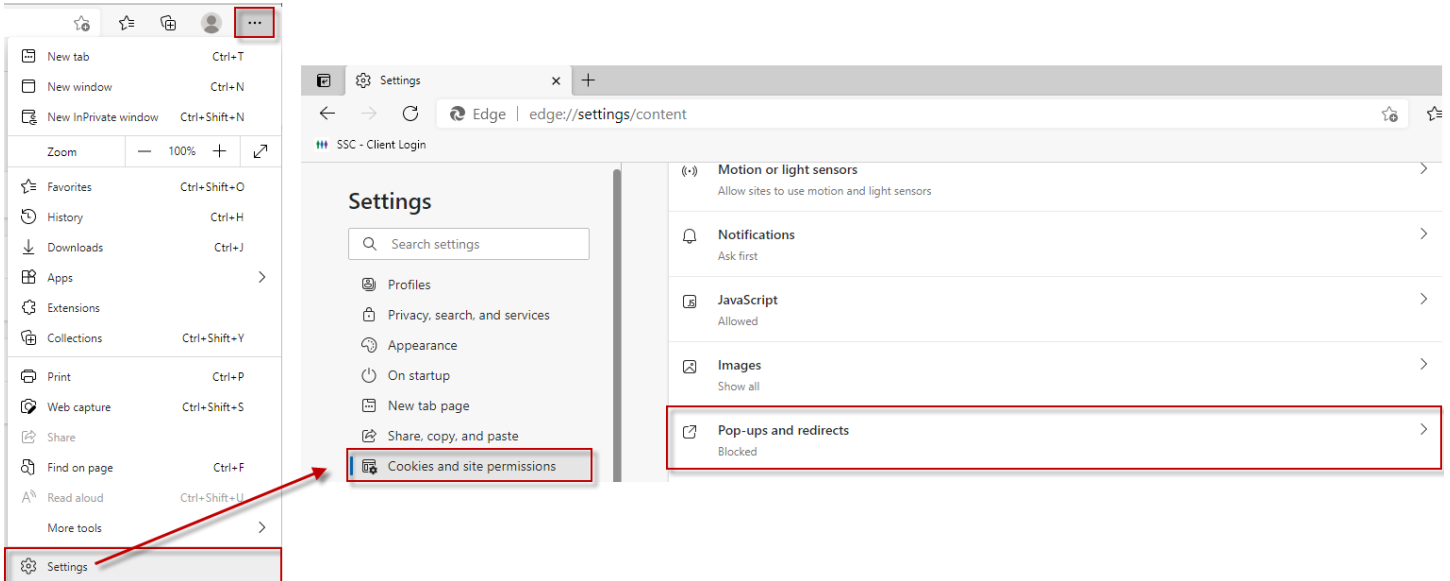


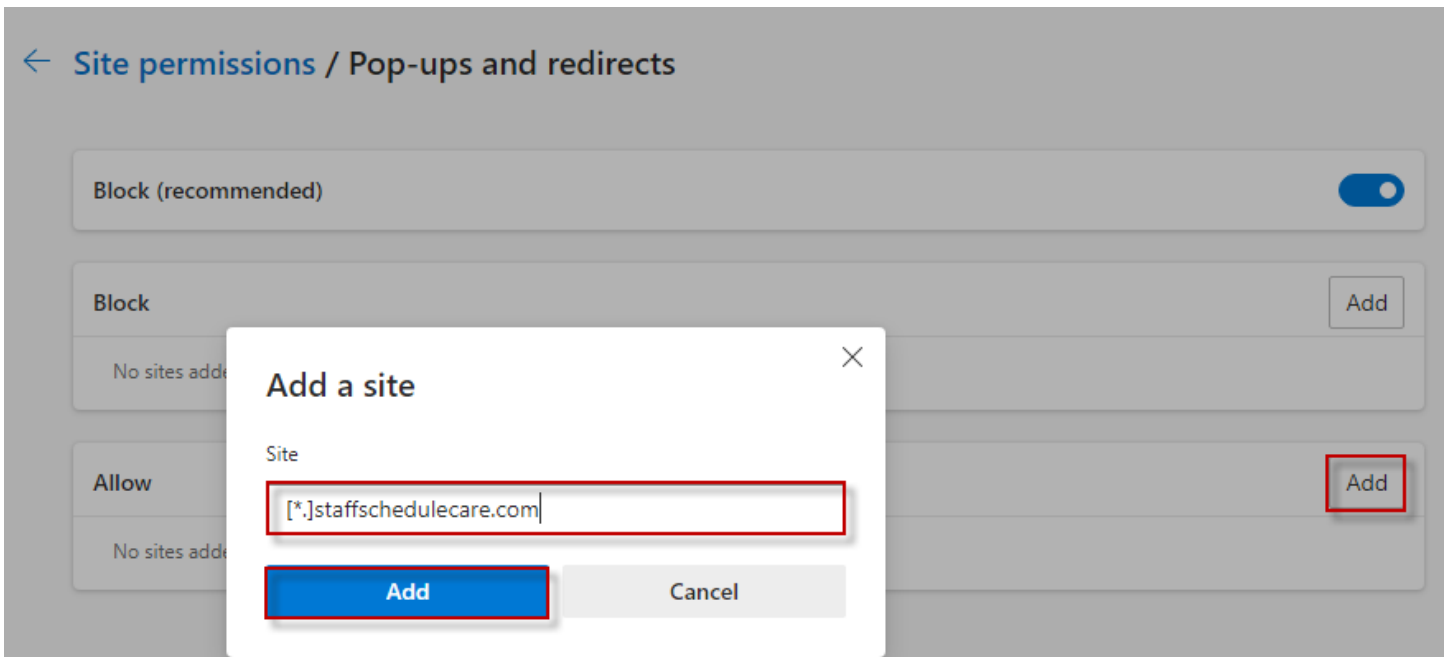
SSC HTML5 Settings

Edge Settings:

To ensure reports can successfully be run perform the following steps. In Edge, ensure that pop-ups are allowed for [*.]staffschedulecare.com. To do this open Edge and click the three dots at the top right and select settings. In the window that opened click on cookies and site permissions the click pop-ups and redirects.

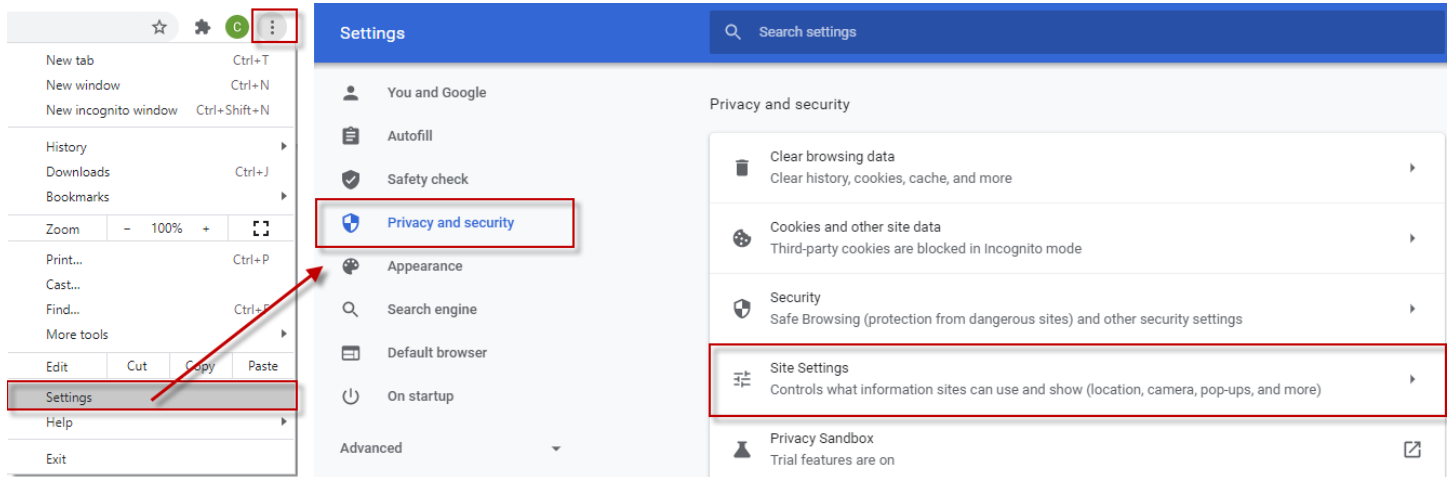


On the next screen under the allow header click the add button. In the pop-up window type [*.]staffschedulecare.com then click add.

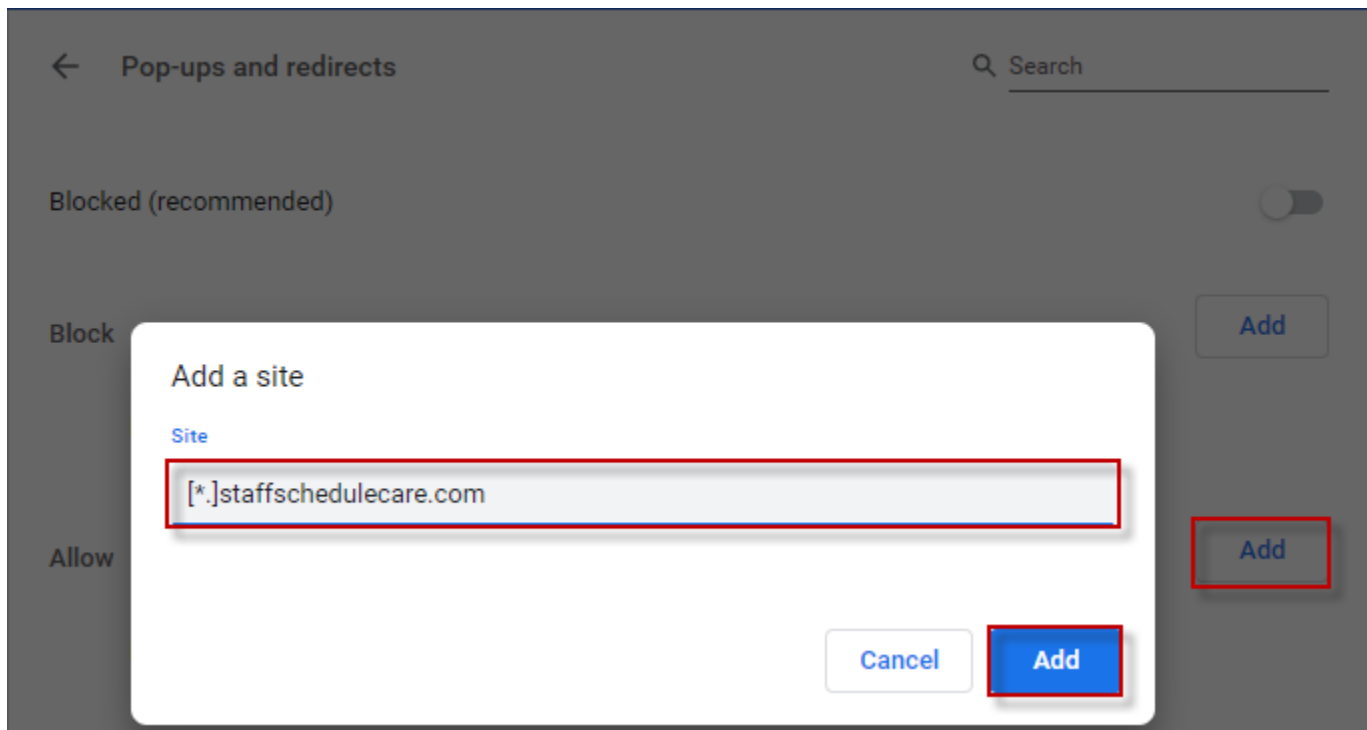


Chrome Settings:

To ensure reports can successfully be run perform the following steps. In Chrome, ensure that pop-ups are allowed for `[*].staffschedulecare.com`. To do this open Chrome and click the three dots at the top right and select settings. In the window that opened click on privacy and security then click site settings.



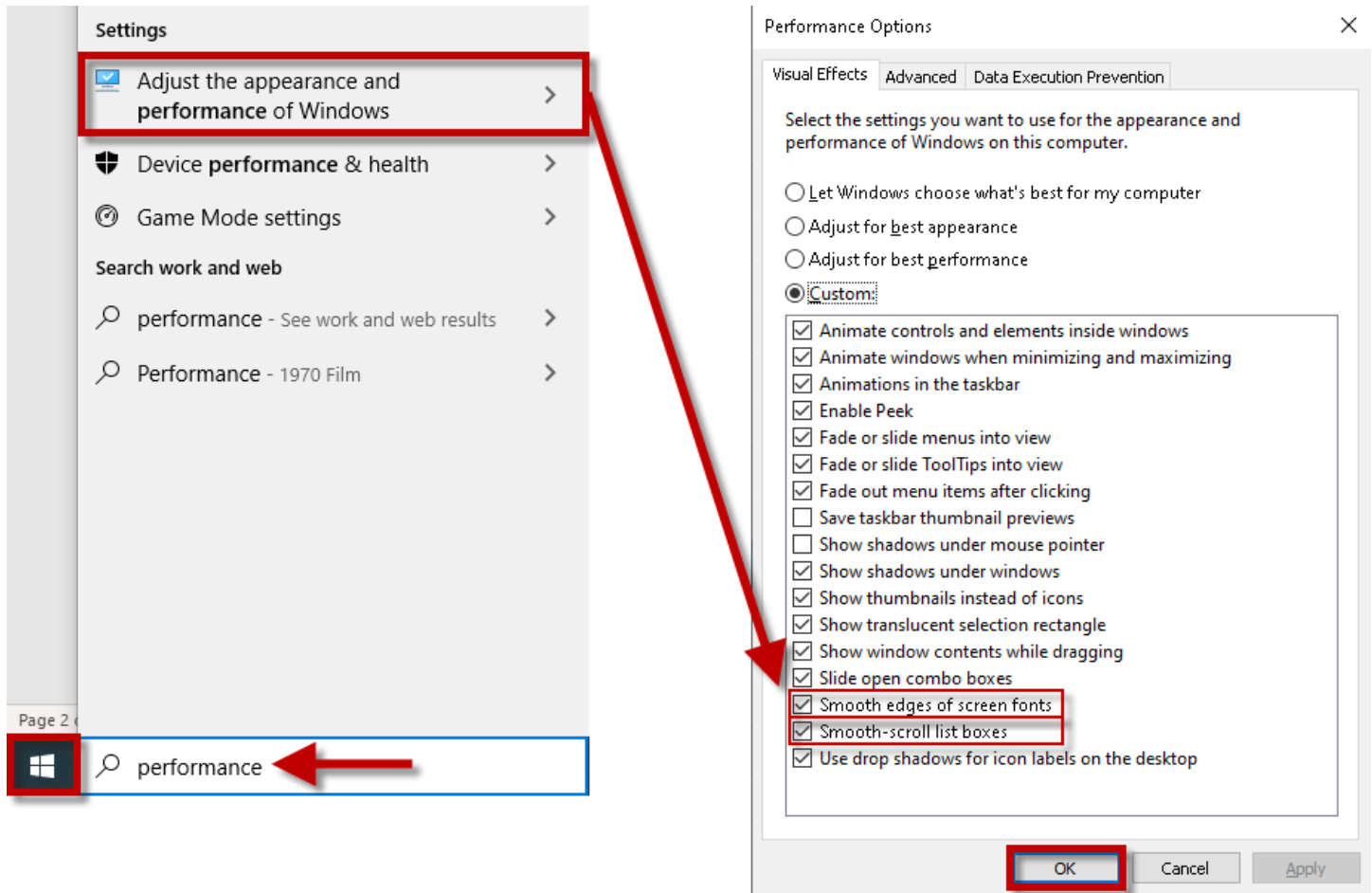
On the next screen scroll down and click the pop-ups and redirects option. Then under the allow header click the add button. In the pop-up window type `[*].staffschedulecare.com` then click add.



Windows 10 Settings:

In Windows 10, ensure that “Smooth edges of screen fonts” and “Smooth-scroll list boxes” are enabled.

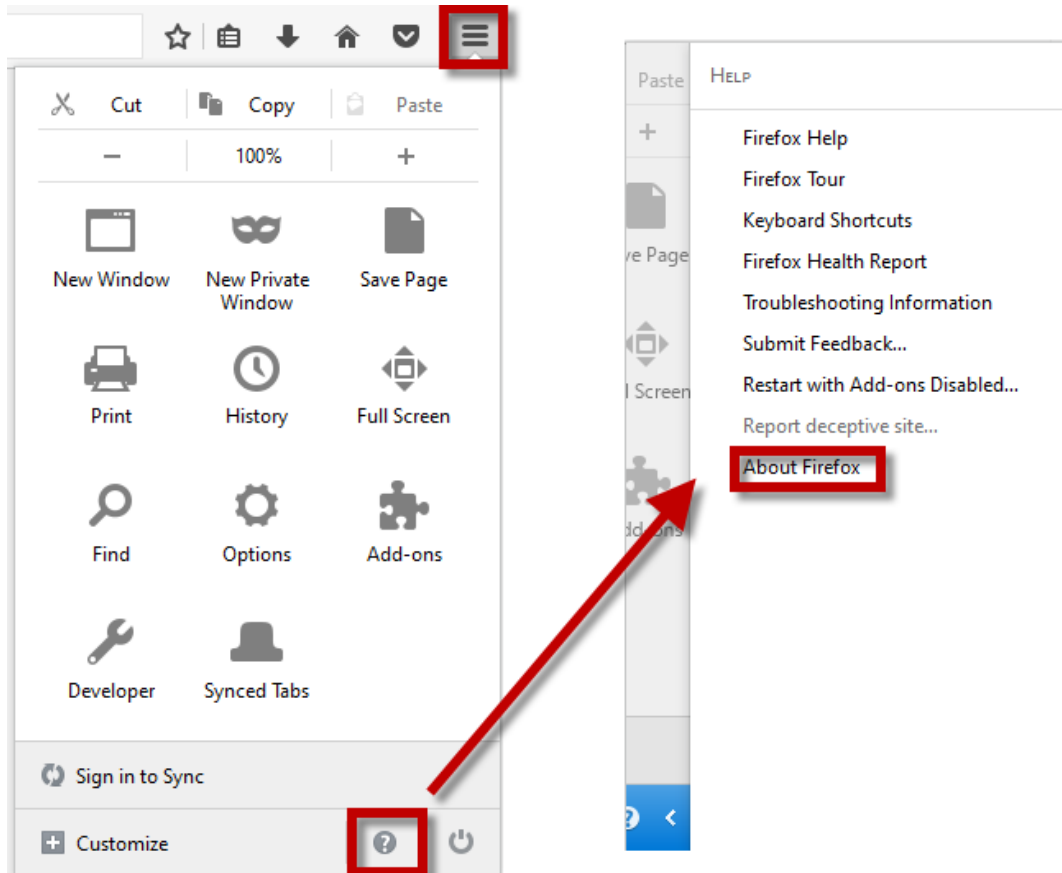
To do this, click the Windows icon and type ‘performance’. Click on the result showing “Adjust the appearance and performance of Windows”. In the resulting window, ensure that ‘Smooth edges of screen fonts’ and “Smooth-scroll list boxes” are checked off, then press the OK button to apply the changes.



Firefox Settings

Ensure that the version of Firefox that is being used is the latest. **Note:** If you were using the Silverlight compatible version of Firefox, then updating this browser will impact your ability to log into previous Silverlight dependent versions of SSC.

- In Firefox click on the hamburger menu. On the resulting menu click the question mark icon. In the screen that opens click on 'About Firefox'.



- A new window will pop-up where the 'Check for updates' button can be pressed.

